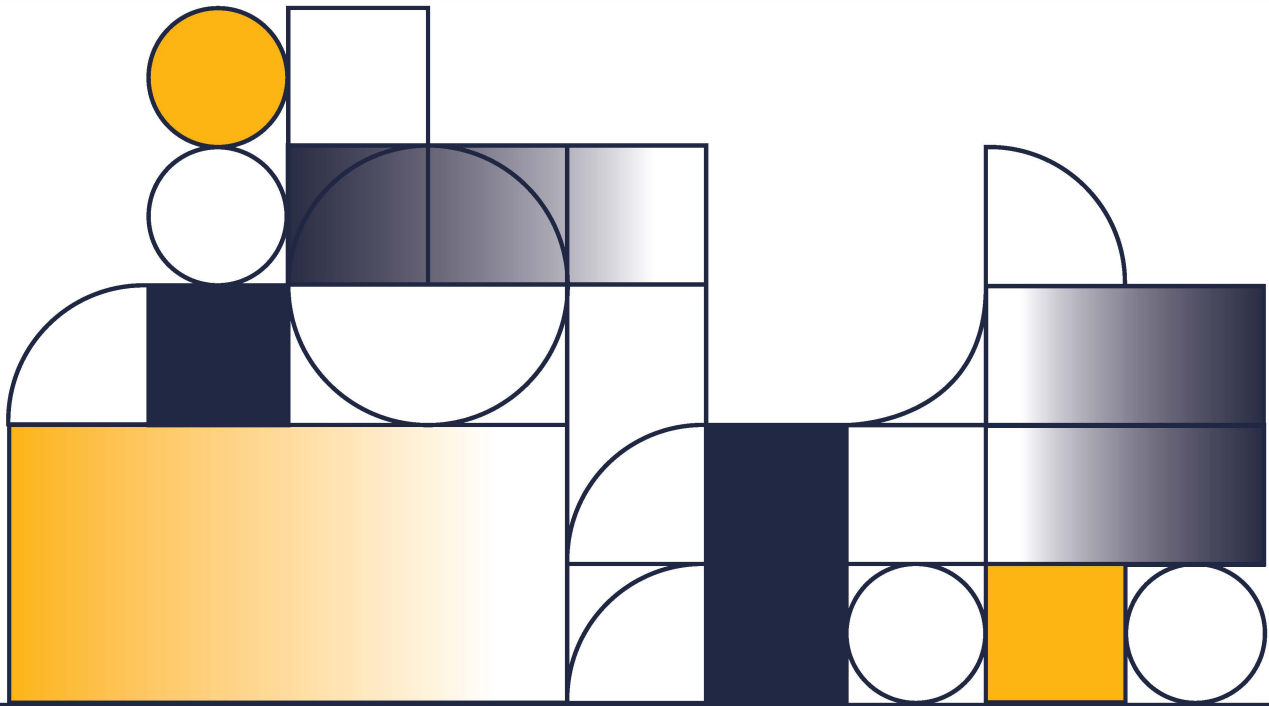




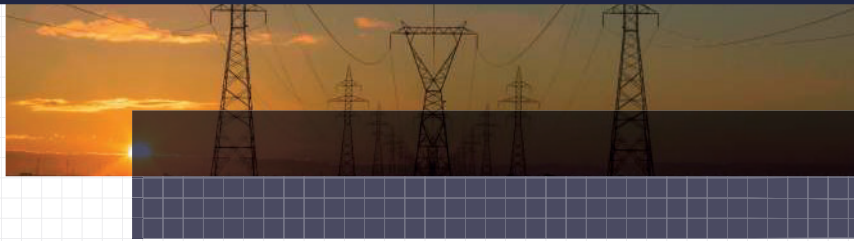
THE LEADER IN ENERGY INFRASTRUCTURE



OFFICIAL STEM EDUCATION PARTNER OF THE DENVER BRONCOS



# WHAT WE DO



## Electric Utility Engineering & Design

- Stations & Facilities
- Civil/Structural Engineering
- Distribution
- Process Engineering



## Power Delivery & Electric Utilities

- Substation
- Transmission
- Distribution
- Telecommunication



## Estimating & Project Controls

- Estimating
- Project Controls
- Risk Management



## Renewable Energy

- Solar (Ground Mounted, Carport, and Rooftops)
- Wind
- Geothermal
- EPC Execution



## PMO/Program Management

- Design, Implementation, and Execution:
  - Program Management Office (PgMO)
  - Project Management Office
  - Project Portfolio Management
  - Project Controls & Reporting
  - Data Architecture & Management
  - Risk Management & Governance



## Electrical Instrumentation & Controls

- Power System Studies, Engineering & Design
- Instrumentation & Controls
- Automation



## Construction Field Services

- Field Inspection
- Startup, Commissioning & Testing
- Flow Monitoring
- Field Service Program
- Field Engineering
- Gas Capture & Cross Compression



## Land Survey

- Survey
- UAS/UAV Aerial Mapping
- Terrestrial 3D & LiDAR Scanning
- Utility Locates



## GIS & Spatial Data

- GIS Jumpstart and Training Program
- GPS Data Collection
- Historic Records Entry
- Integrity Management
- GIS Mapping



## Engineering, Procurement, and Construction

- Substation
- Transmission
- Distribution
- Telecommunication
- Renewable Energy
  - Ground-mounted, Roof-mounted, and Carport Solar
  - Wind
  - Geothermal
  - Battery Energy Storage Systems (BESS)
- Construction Manager at Risk (CMAR)
- Project Controls & Reporting
- Procurement Management & Reporting



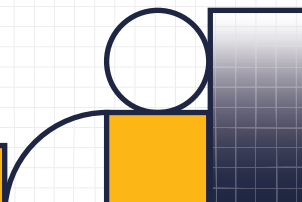
## Geotechnical Engineering

- Trenchless
- Foundation
- Earthquake & Seismic Design
- Trenchless Installations
- Retaining Walls
- Deep and Shallow Foundations
- Electrical Transmission Tower and Foundation Design
- Engineering Geology
- Geohazard Assessments & Remediation
- Liquefaction Remediation & Soil Stabilization



## Sustainability & Net-Zero

- Hydrogen
- RNG
- Gas Capture and Cross-Compression



## WHO WE ARE

Campos EPC is the industry leader in delivering engineering design, consulting services, integrity management, and turnkey solutions for our Utility and Oil and Gas clients. Safety is at the forefront of everything we do. The Campos Team offers decades of experience, and our team is capable of providing an array of services to match our client's needs. Our expertise ranges from scoping, estimating, and feasibility studies through detailed design, construction, and commissioning support. With over 700 employees and multiple offices throughout the U.S. and Canada, we effectively serve our clients with the expertise needed.

Our goal is to help our clients analyze and address project objectives through budget-conscious actionable solutions.

EPC not only says what we do, but it also aligns with our Pledge of Excellence. We pledge to operate with the highest standards of Ethics, Performance, and Compliance through the full project cycle. It is this philosophy that has made Campos EPC the industry leader in EPC Pipeline Integrity Management providing top-notch, quality work and value to clients nationwide.

## COMMITTED TO THE COMMUNITIES WE SERVE

With over 5,000 students impacted over 25 schools and universities, we believe strongly in our future engineers and managers, having invested over \$6,100,000 to STEM programs.

Contact us for more information if you'd like to join our cause!



**It's what we believe. It's how we do business. It's why we do what we do. Our core values define how we operate every aspect of our business at Campos EPC.**



**CLIENT COMMITMENT**

We pride ourselves on being responsive to each client's specific needs. Our service-oriented approach guarantees you the utmost assurance that you'll have a team available 24/7 to support you on your project. It's our way of saying we're committed to doing what it takes to get the job done.



**SERVICE WITH VALUE**

Beyond providing quality service and expert engineering support, our services are priced fairly in comparison to the market options and delivered with above-market value. We have your best interest in mind when it comes to getting the job done, not only on time but on budget.



**ETHICS AND COMPLIANCE**

We adhere to the "Golden Rule" within our company and when working with our clients. We also have a team of professionals to ensure our programs are implemented in accordance with industry regulations and standards.



Headquarters

- Campos
- Co-Locations
- Campos EPC
- Campos CVG Staffing Solutions
- Campos NACC Construction
- Campos Fabrication
- Campos Sage
- Campos Precision
- Campos MX



Learn more at [camposepc.com](http://camposepc.com)

**A MEMBER OF THE CAMPOS FAMILY**



[camposcompanies.com](http://camposcompanies.com)